



5 Duncan Crescent Mount Barker, SA

4 3 6

## Your very own Castle on the Hill!!!

Imagine driving up to your very own castle on the hill every night; fresh air and room to breathe.

This stunning Scott Salisbury home is situated in one of the most tightly held streets in Martindale, on one of the premium allotments in the estate.

Elevated with views from every window, you will catch yourself just standing there feeling the peace and enjoying the views.

As you enter this luxurious home you will be greeted by the grand formal lounge and dining room with open fire.

Private and spacious, an area for the adults to retreat away from the kids.

However if family nights together curled up on the couch watching a movie are more your thing ? enjoy the fabulous media room with surround sound system included ? or it could be that optional 5th bedroom or office.

Walk through to the new and modern kitchen with waterfall stone bench and glass splashbacks, filtered water on tap, understairs pantry and plenty of room to entertain. Overlooking the spacious family/dining room with combustion heater for those cosy winter evenings ? yo

**Price:** \$955,000  
**Council Rates:** \$957.00 p/q  
**Water Rates:** \$67.00 p/q



**Jackie Bayly**

0414 744 015

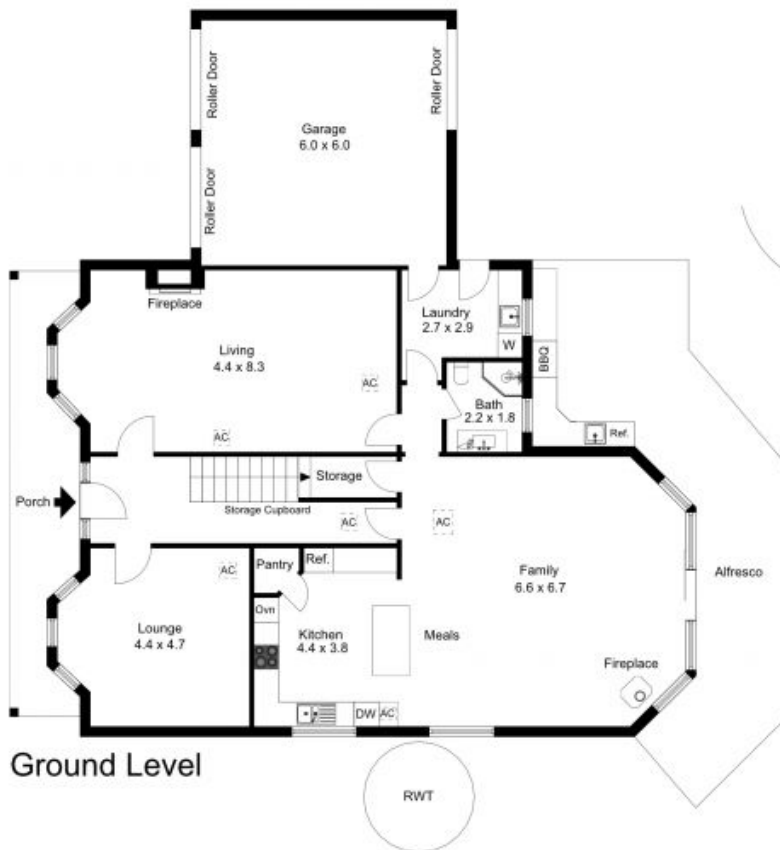


**Steve Bayly**

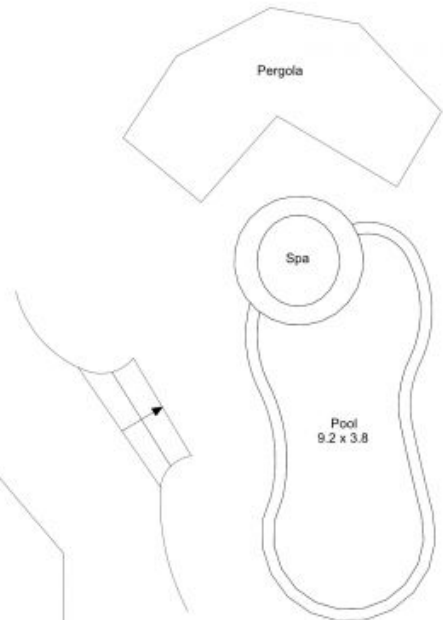
0414 744 200



Upper Level



Ground Level



Internal Area: 309 sqm.approx.  
 External Area: 87 sqm.approx.  
 Total Area: 396 sqm.approx.